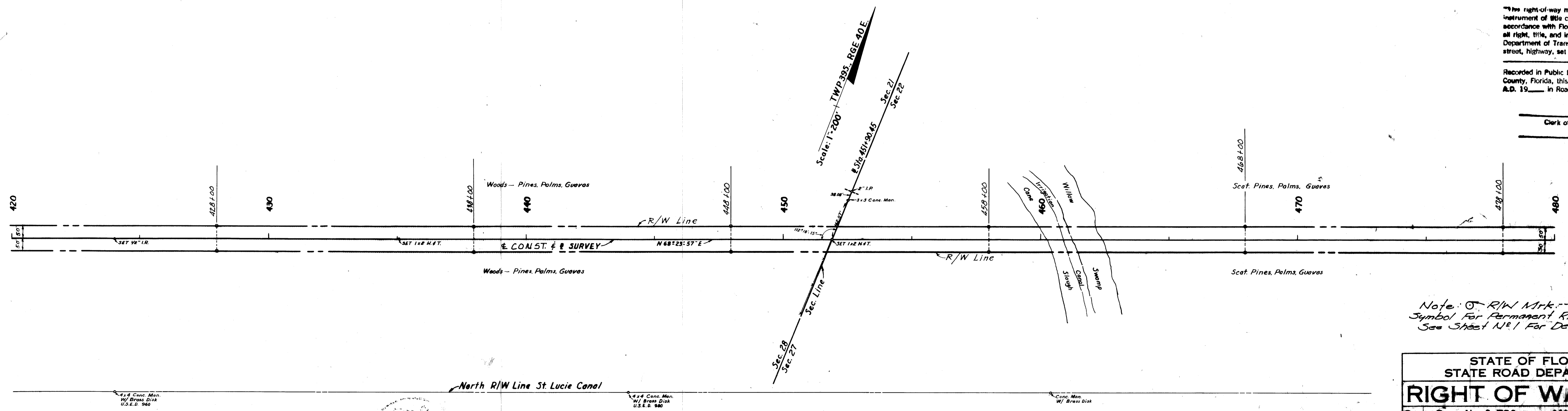
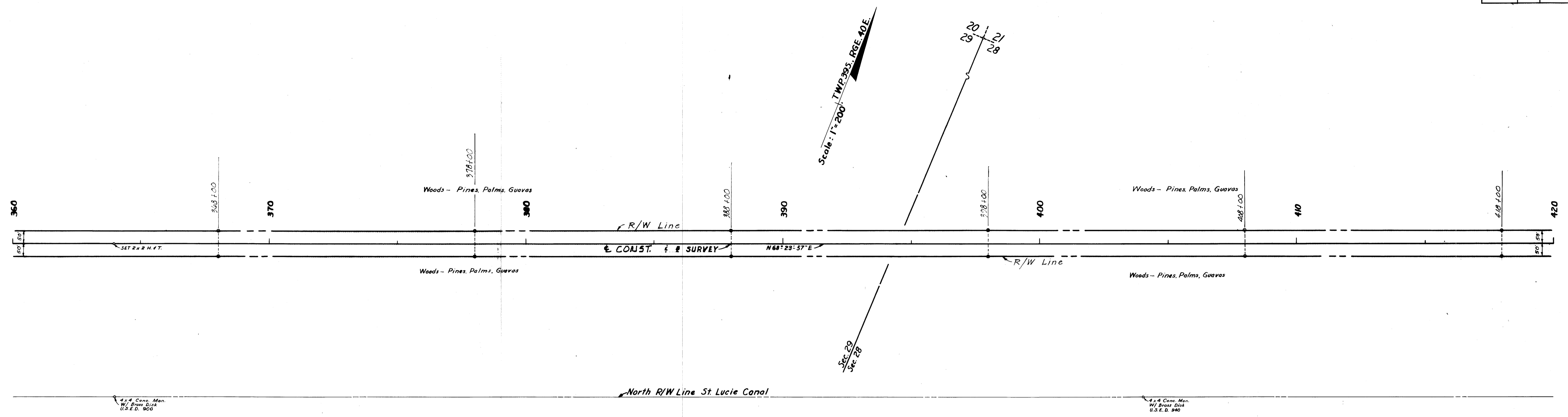


FED. ROAD DIV. No.	STATE	PROJECT No.	FISCAL YEAR	SHEET No.
3	FLA.	89503-2602	68	2



"The right-of-way map when recorded in accordance with Florida Statutes 337.29 (1977) all right, title, and interest in the road, street, highway, set forth on this map to County, Florida, this ___ day of ___ A.D. 19___ in Road Plat Book ___ Page ___

Clerk of Circuit Court
 County, Florida

Note: \odot R/W Mrk. -
 Symbol for Permanent R/W Markers
 See Sheet No. 1 for Details



STATE OF FLORIDA
 STATE ROAD DEPARTMENT
RIGHT OF WAY MAP
 STATE ROAD No. 5-726

DRAWN	Crimmings	June '68	APPROVED	<i>[Signature]</i>
TRACED	Griffin	June '68		
CHECKED				
COMPARED				

SECTION 89503-2602